



**APT 57 The Maltings 3 Wetmore Road, DE14 1SE, Wetmore Street, Burton on Trent**

Burton on Trent

£160,000



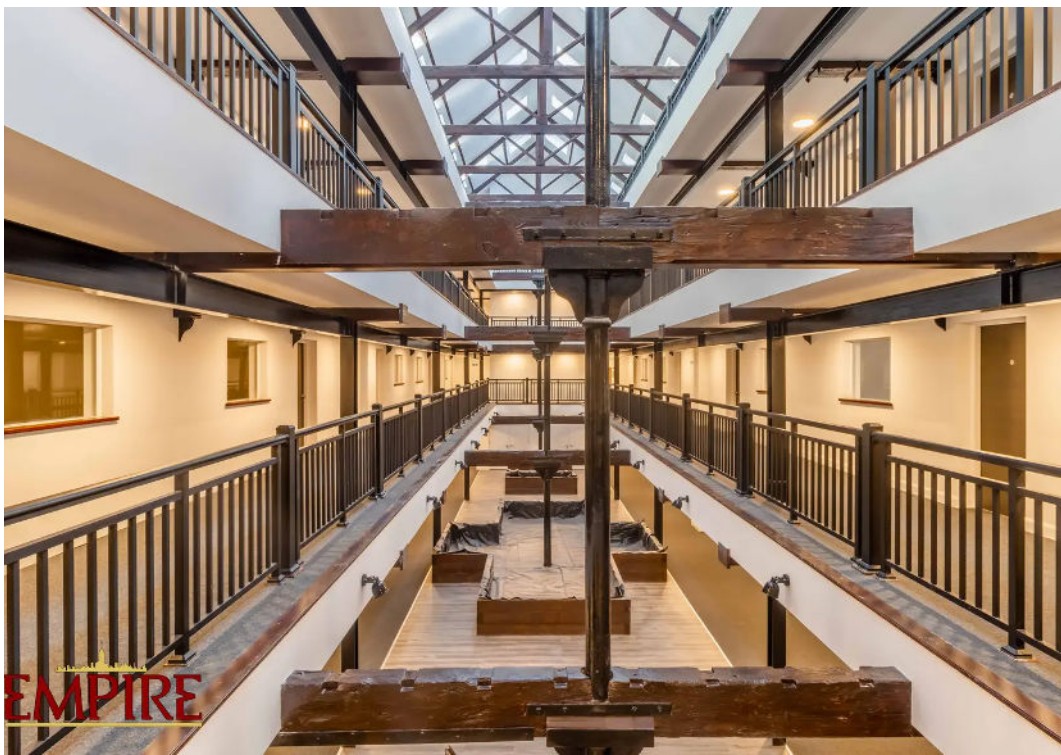
# APT 57 The Maltings 3 Wetmore Road, DE14 1SE, Wetmore Street

, Burton on Trent

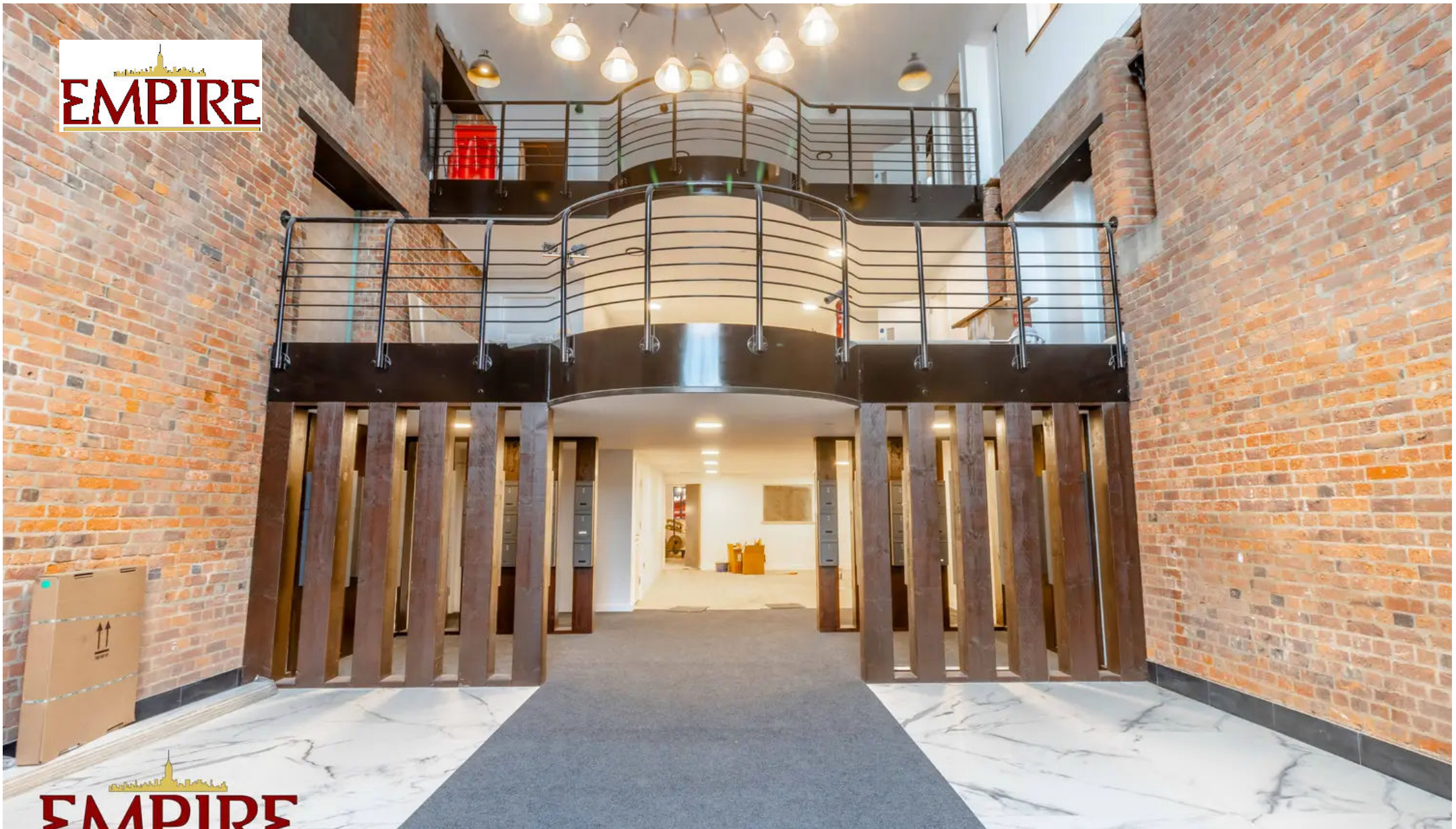
PURCHASE PRICE DISCOUNTS AVAILABLE FOR FIRST TIME BUYERS AND HOMEOWNERS  
FREE LEGALS & FURNITURE PACKAGE ON ALL SALES The Maltings is a stunning  
Grade II listed building centrally located within the close proximity of Burton On  
Trent's town centre.  
Tenure: Leasehold

- Grade Two Character Listed Building
- Off Road Allocated Parking
- Unique Central Glass Roofed Atrium
- Development Now Completed
- Final One & Two Bedroom Apartments Available
- FREE LEGALS & FURNITURE PACKAGE ON ALL SALES









# Empire

27 Frederick Street, Birmingham - B1 3HH

0121 514 8850 • [info@empirelpm.com](mailto:info@empirelpm.com) • [www.empirelpm.com/](http://www.empirelpm.com/)

