



Flat 89, 3 The Maltings Wetmore Road, Burton-On-Trent

Burton-On-Trent

In Excess of £220,500

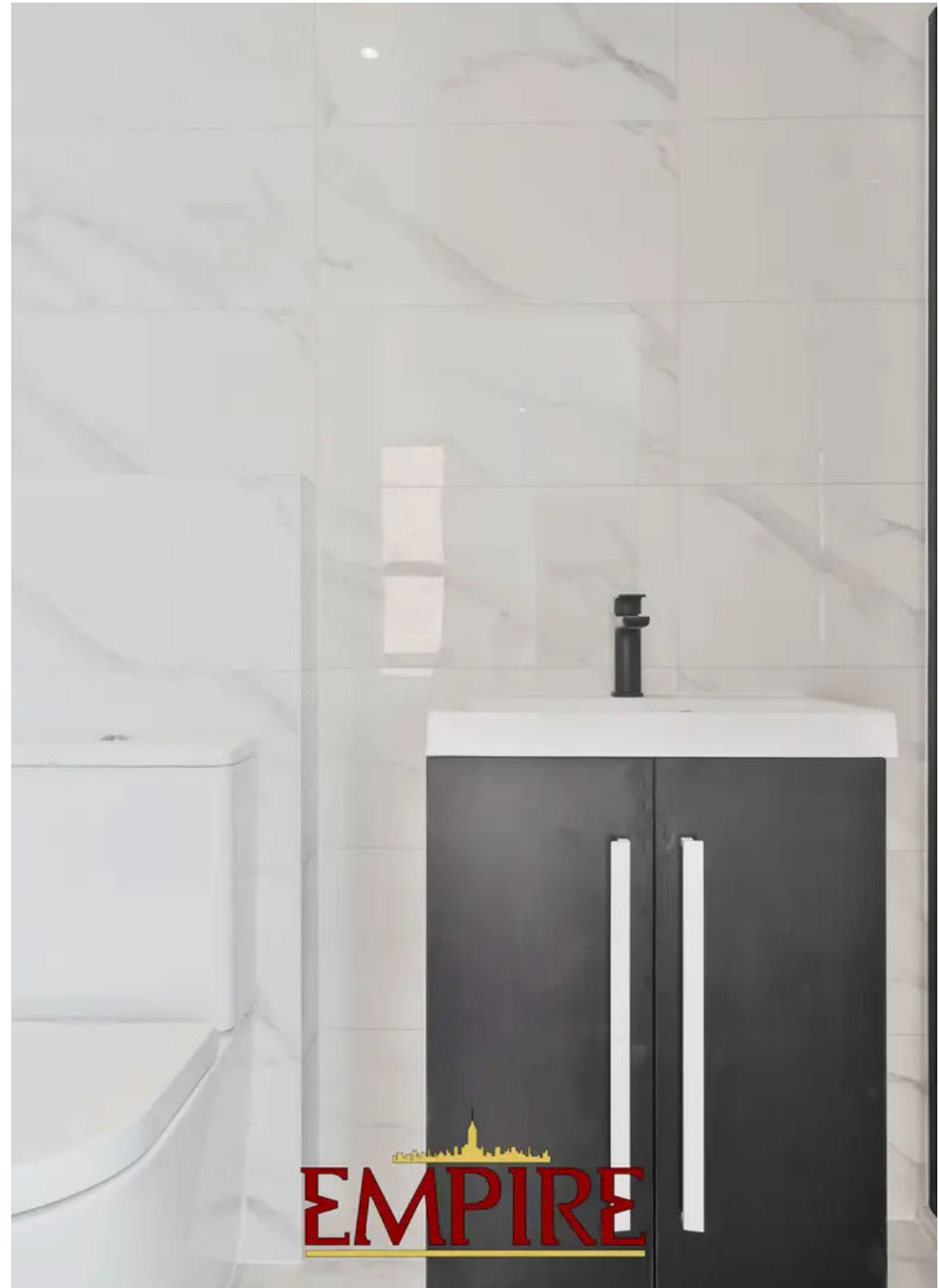


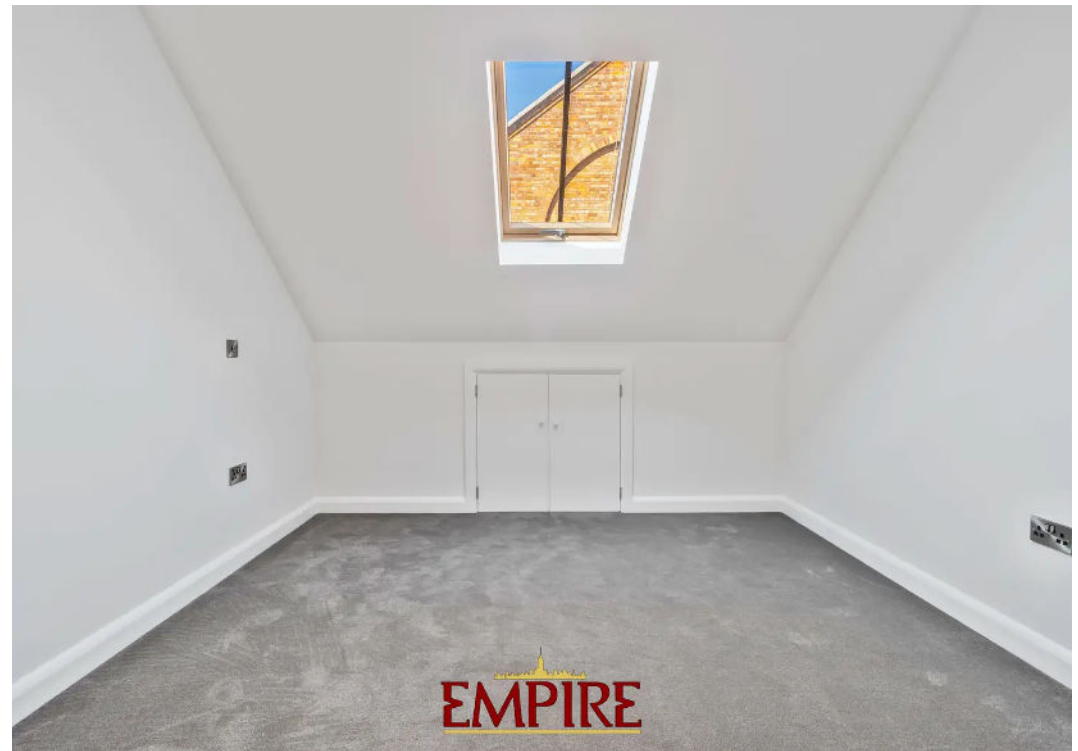
Flat 89

3 The Maltings Wetmore Road, Burton-On-Trent

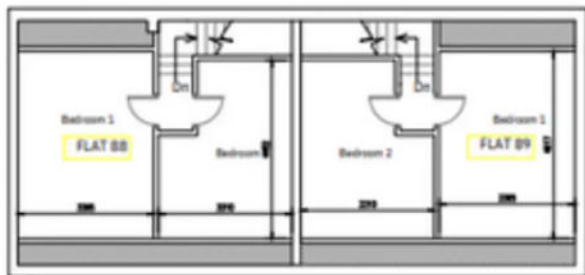
The Maltings is a stunning Grade II listed building centrally located within the close proximity of Burton On Trent's town centre. With rich history and an abundance of character the building benefits from having many original features, including original beams and exposed brick work throughout.
Tenure: Leasehold

- GRADE TWO CHARACTER LISTED BUILDING
- OFF ROAD ALLOCATED CAR PARKING
- NEWLY COMPLETED DEVELOPMENT
- UNIQUE CENTRAL GLASS ROOFED ATRIUM
- SELF CONTAINED DUPLEX APARTMENT
- SHOW APARTMENT AVAILABLE



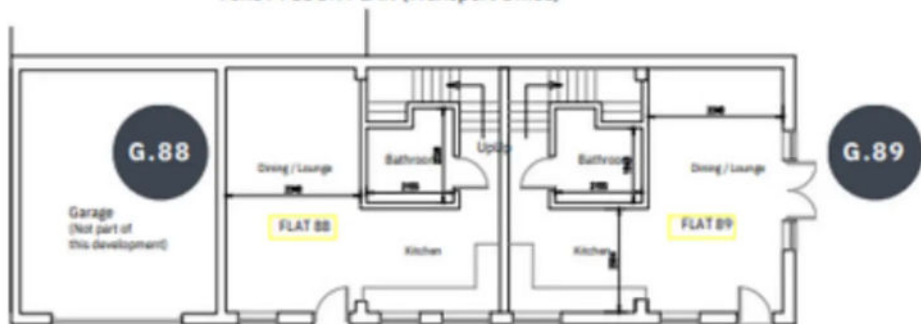


88



89

FIRST FLOOR PLAN (Transport Office)



G.88

G.89

GROUND FLOOR PLAN (Transport Office)



Empire

27 Frederick Street, Birmingham - B1 3HH

0121 514 8850 • info@empirelpm.com • www.empirelpm.com/

