

**EMPIRE**



**Apt 4, 34 Lichfield Road, Sutton Coldfield**

Sutton Coldfield

**£170,000**



# Apartment 4

34 Lichfield Road, Sutton Coldfield

JUST 12 COMPLETED, TENANTED UNITS LOCATED IN THE ROYAL TOWN OF SUTTON COLDFIELD. Empire are excited to announce our completely off-market opportunity of 12 luxury well apportioned 1, 2 & 3 bedroom apartments in The Old Art School.

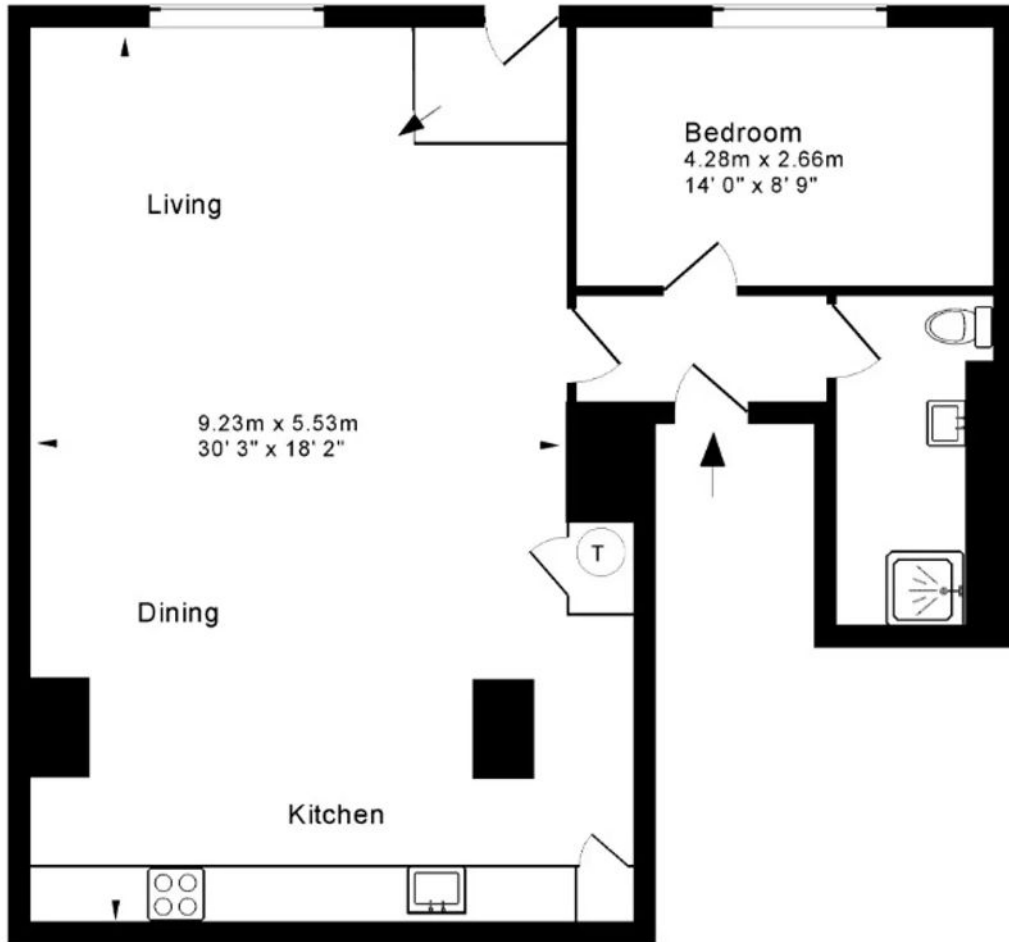
Council Tax band: C

Tenure: Leasehold

- Stunning 1 Bedroom Luxury Apartment
- 12 Luxury Apartments, 1,2 & 3 beds
- Large Open Plan Living/Dining/Kitchen
- Luxury Shower Room
- Viewing Essential
- Iconic Building Conversion
- Expensively Fitted Throughout
- Communal Garden







Approx. Gross Internal Floor Area : 805 Sq. Ft. / 75 Sq. M



# Empire

27 Frederick Street, Birmingham - B1 3HH

0121 514 8850 • [info@empirelpm.com](mailto:info@empirelpm.com) • [www.empirelpm.com/](http://www.empirelpm.com/)

