



APT 57 The Maltings 3 Wetmore Road, DE14 1SE, Wetmore Street, Burton on Trent

Burton on Trent

£160,000



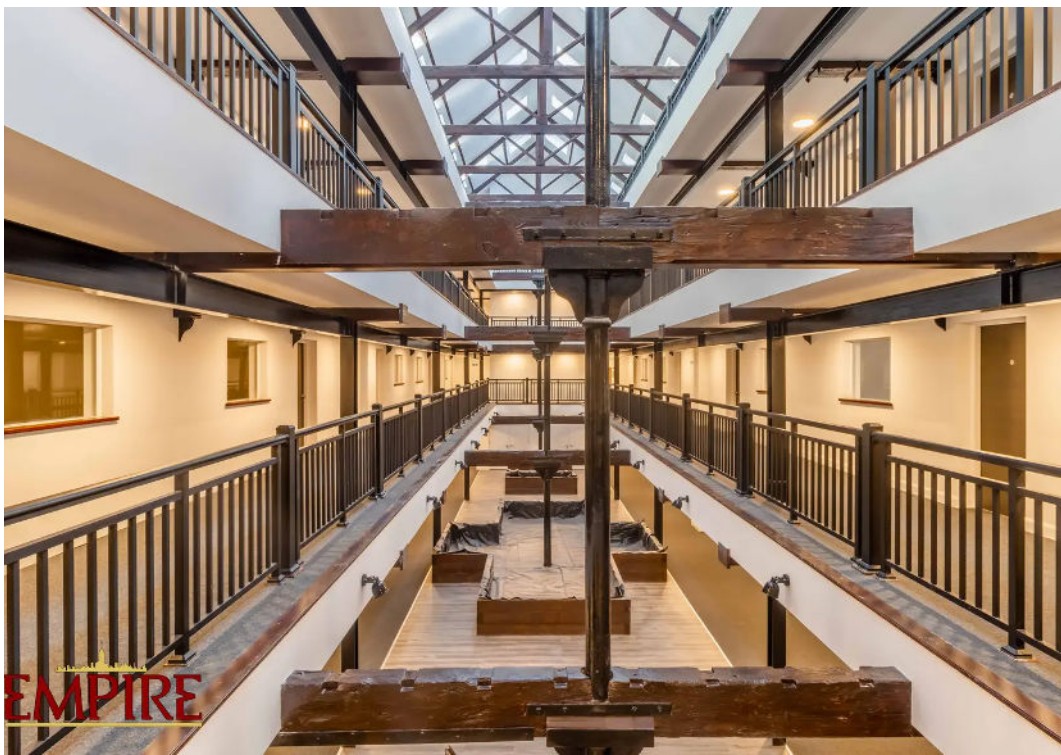
APT 57 The Maltings 3 Wetmore Road, DE14 1SE, Wetmore Street

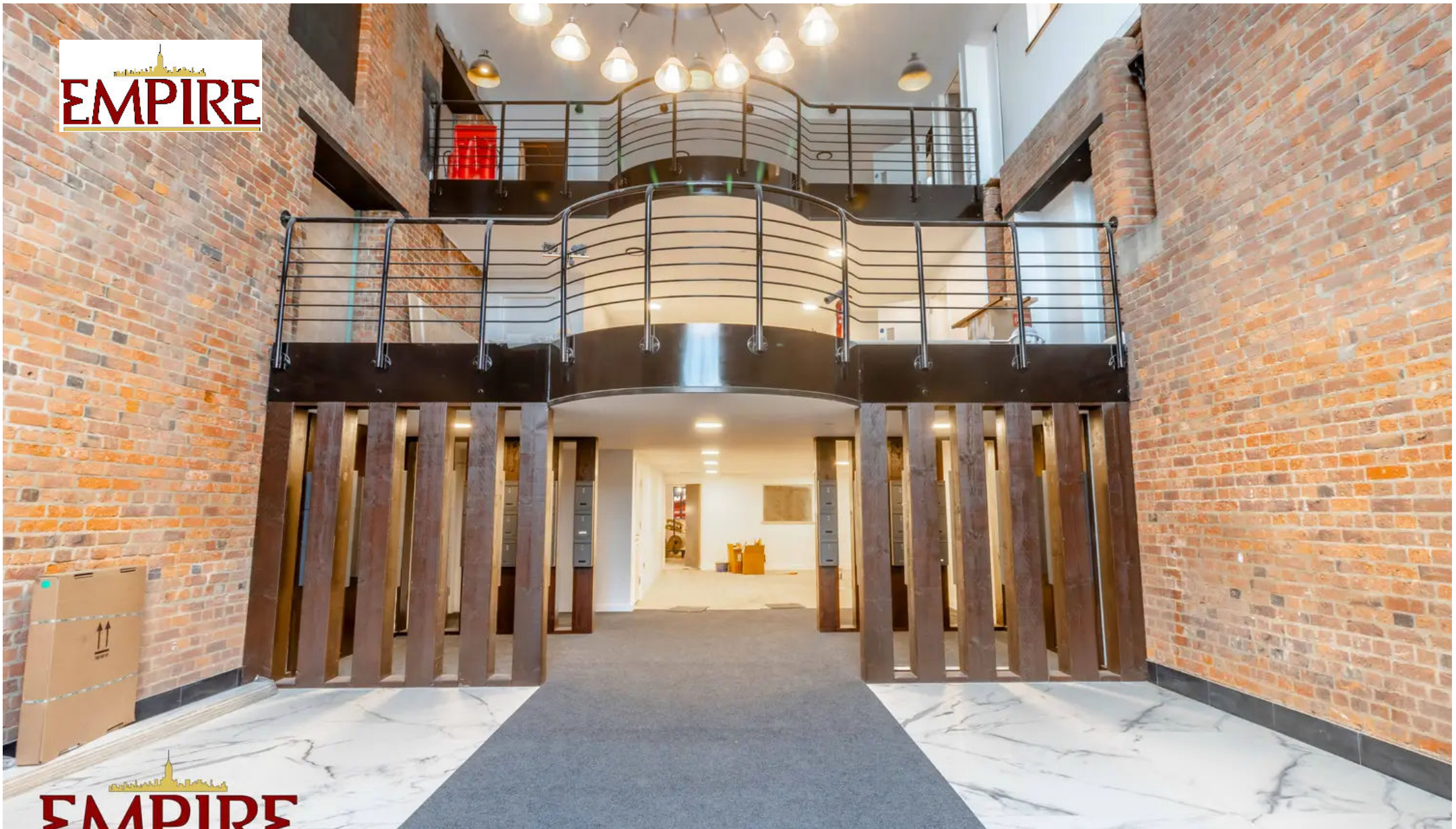
, Burton on Trent

PURCHASE PRICE DISCOUNTS AVAILABLE FOR FIRST TIME BUYERS AND HOMEOWNERS
FREE LEGALS & FURNITURE PACKAGE ON ALL SALES The Maltings is a stunning
Grade II listed building centrally located within the close proximity of Burton On
Trent's town centre.
Tenure: Leasehold

- Grade Two Character Listed Building
- Off Road Allocated Parking
- Unique Central Glass Roofed Atrium
- Development Now Completed
- Final One & Two Bedroom Apartments Available
- FREE LEGALS & FURNITURE PACKAGE ON ALL SALES







Empire

27 Frederick Street, Birmingham - B1 3HH

0121 514 8850 • info@empirelpm.com • www.empirelpm.com/

